

## A T JUNIPER (LIVERPOOL) Ltd

### Juniper 2 x 25 Gallon Compressor Washing Rig (JMP/CFM56/D/4777/C601)

This rig is all as per our rig JMP/CFM56/D/4777/C200  
apart from for the following modifications.



#### The modifications are as follows:

- Actuated ball valves replace the existing manual outlet ball valves for remote operation.
- Remote control with 50m cable complete with Harting fitting for connection to rig.
- 380/440V, 3 phase, 50hz electrical heating system incorporating control circuit for remote operation.
- Accessory Air Inlet Kit incorporated (JMP/CFM56/D/6612) complete with quick release Stäubli socket and plug (SM947).
- Operating instructions and decal set in French.
- Set of LEAP-1A engine wash probes (JMP/LEAP/D/7028).
- Taller rear probe storage box to accommodate LEAP-1A probe set.

## Operation

The fluid outlet ball valves fitted to each of the tanks have been replaced with electrically actuated ball valves (220V AC).

These valves can also be operated manually by operation of the Manual /Auto lever on the side of the valve.

In the auto position the valves are electrically driven.

In the manual position the valve can be operated like any other ball valve

IE: When the T bar handle is in line with the flow, the valve is open and when the T bar handle is across the direction of flow, the valve is closed.

The control system for heating the tanks to 70°C has been modified to supply power to these valves. No other external power is required to power the valves.

The valves are electrically isolated when the immersion heater ON buttons are pressed IE: During the heating of the tanks.

A Harting Socket fitted on the underside of the control box enables connection of the remote control box. A 7 core, 0.75mm, 50m (54.7 yards) cable (5 cores used) has been provided, one end having a Harting plug for connection to the Harting socket and the other end a connection to the remote control box.

The remote control box is fitted with two switches, one switch for each valve. Each switch has an open and closed position for the respective valve. From the moment a switch on the remote control is operated, it takes 12 seconds before the respective valve is fully open and 12 seconds before it is fully closed.

### **Note:**

The cable supplied with the Remote Control is for use in the test cell.

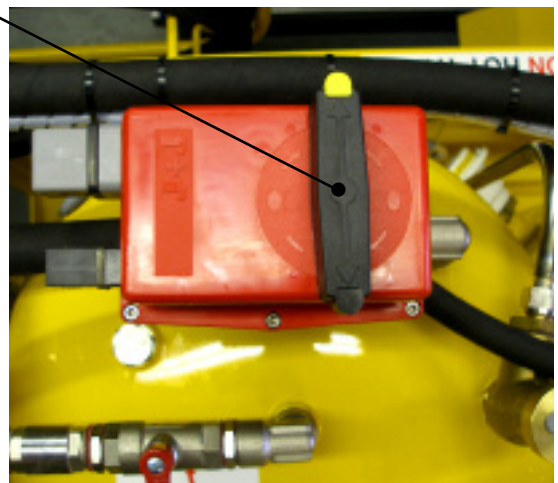
Actuated ball valves (SM886)



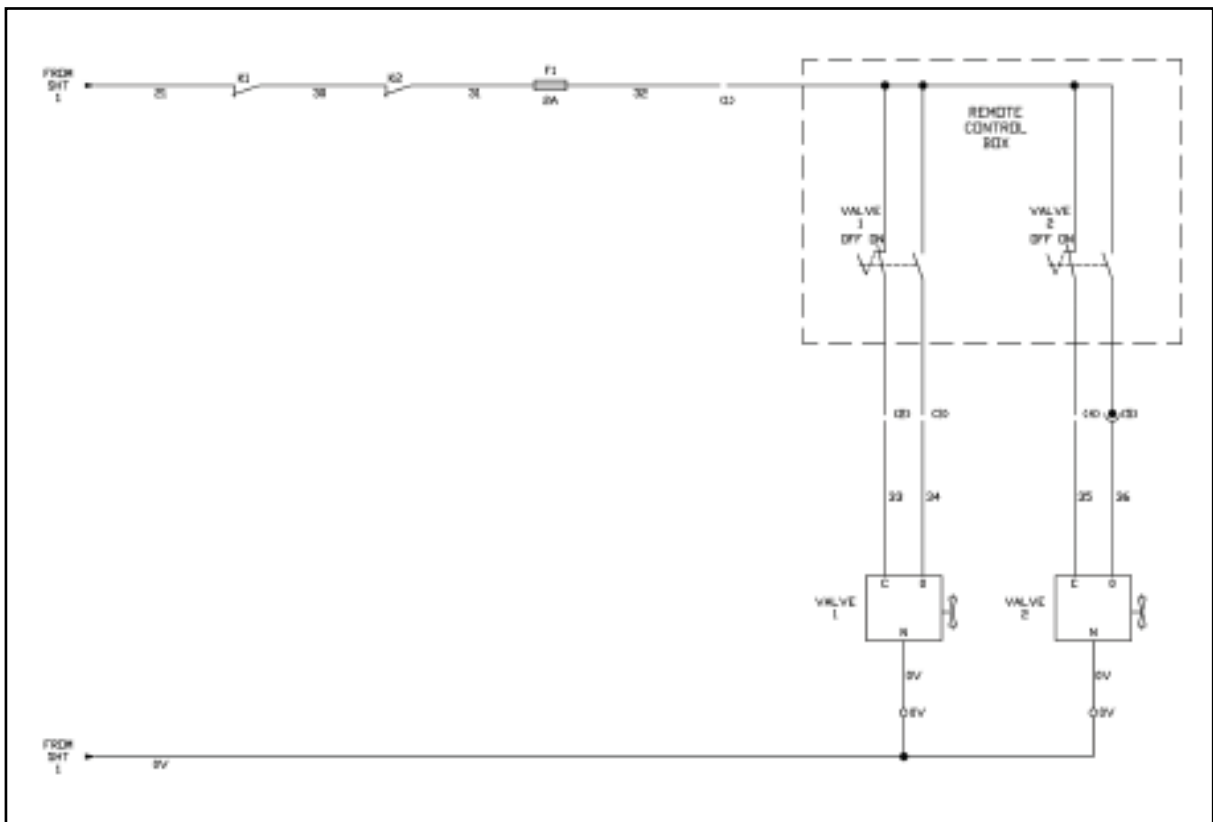
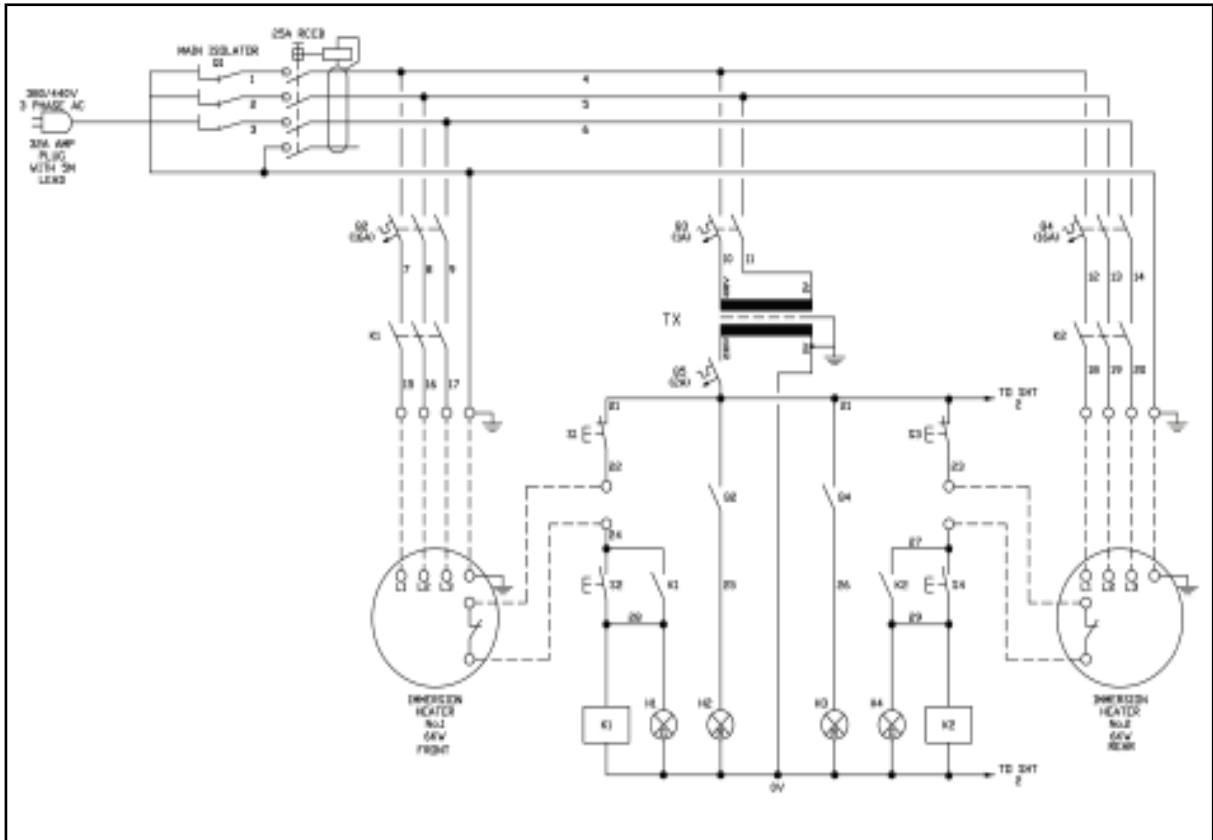
Actuated ball valves - SM886

Manual/Auto lever

Valve 'T' bar handle



Electrical Schematic diagrams



## Spare parts list.

<b>Article</b>	<b>Fabricant</b>	<b>Description</b>	<b>Reference</b>	<b>Qte</b>
E1	Legrand	Chassis	JMP/SNECMA/D/7059/1	1
E1	Legrand	Plaque du Chassis	JMP/SNECMA/D/7059/2	1
RCCB	Schneider	Residuel Courant Disjoncteur 25A 30mA	JMP/SNECMA/D/7059/3	1
RCCB	Schneider	RCCB Chassis	JMP/SNECMA/D/7059/4	1
Q1	Schneider	Porte Isolateur 32Amp	JMP/SNECMA/D/7059/5	1
Q2	Schneider	Disjoncteur 3pole 16Amp	JMP/SNECMA/D/7059/6	1
Q2	Schneider	Passer Auxiliaire	JMP/SNECMA/D/7059/7	1
Q3	Schneider	Disjoncteur 2pole 1Amp	JMP/SNECMA/D/7059/8	1
Q4	Schneider	Disjoncteur 3pole 16Amp	JMP/SNECMA/D/7059/9	1
Q4	Schneider	Passer Auxiliaire	JMP/SNECMA/D/7059/10	1
Q5	Schneider	Disjoncteur 1pole 2Amp	JMP/SNECMA/D/7059/11	1
K1	Schneider	Chauffage Contacteur 25Amp	JMP/SNECMA/D/7059/12	1
K2	Schneider	Chauffage Contacteur 25Amp	JMP/SNECMA/D/7059/13	1
S1	Schneider	Bouton-Poussoir, Rouge	JMP/SNECMA/D/7059/14	1
S2	Schneider	Bouton-Poussoir, Vert	JMP/SNECMA/D/7059/15	1
S3	Schneider	Bouton-Poussoir, Rouge	JMP/SNECMA/D/7059/16	1
S4	Schneider	Bouton-Poussoir, Vert	JMP/SNECMA/D/7059/17	1
H1	Schneider	Vert Lampe	JMP/SNECMA/D/7059/18	1
H2	Schneider	Rouge Lampe	JMP/SNECMA/D/7059/19	1
H3	Schneider	Rouge Lampe	JMP/SNECMA/D/7059/20	1
H4	Schneider	Vert Lampe	JMP/SNECMA/D/7059/21	1
TX	Legrand	160VA Transformateur	JMP/SNECMA/D/7059/22	1
	Contaclip	Bornes	JMP/SNECMA/D/7059/23	10
	Contaclip	Bornes de Terre	JMP/SNECMA/D/7059/24	2
	Contaclip	Supports d'extremite	JMP/SNECMA/D/7059/25	2
	Contaclip	Din 35 Rail	JMP/SNECMA/D/7059/26	1
	Briticent	Huit façon bloc de la Terre	JMP/SNECMA/D/7059/27	1
	Iboco	40x40 Trunking	JMP/SNECMA/D/7059/28	1
		Cinq Câble de base 4mm SY	JMP/SNECMA/D/7059/29	5m
		Sept Câble de base 4mm YY	JMP/SNECMA/D/7059/30	5m
	CMP	SY Cable Glands	JMP/SNECMA/D/7059/31	5
S5	Schneider	Selecteur	JMP/SNECMA/D/7059/32	1
S6	Schneider	Selecteur	JMP/SNECMA/D/7059/33	1
E2	Schneider	Panneau de Commande Distance	JMP/SNECMA/D/7059/34	1
		Sept Câble de base 0.75mm YY	JMP/SNECMA/D/7059/35	50m
	Harting	Han E Series 6 Way Fiche Mâle	JMP/SNECMA/D/7059/36	1
	Harting	Han E Series 6 Way Presse Femelle	JMP/SNECMA/D/7059/37	1
	Stäubli	prise	SM947/1	1
	Stäubli	fiche	SM947/2	1



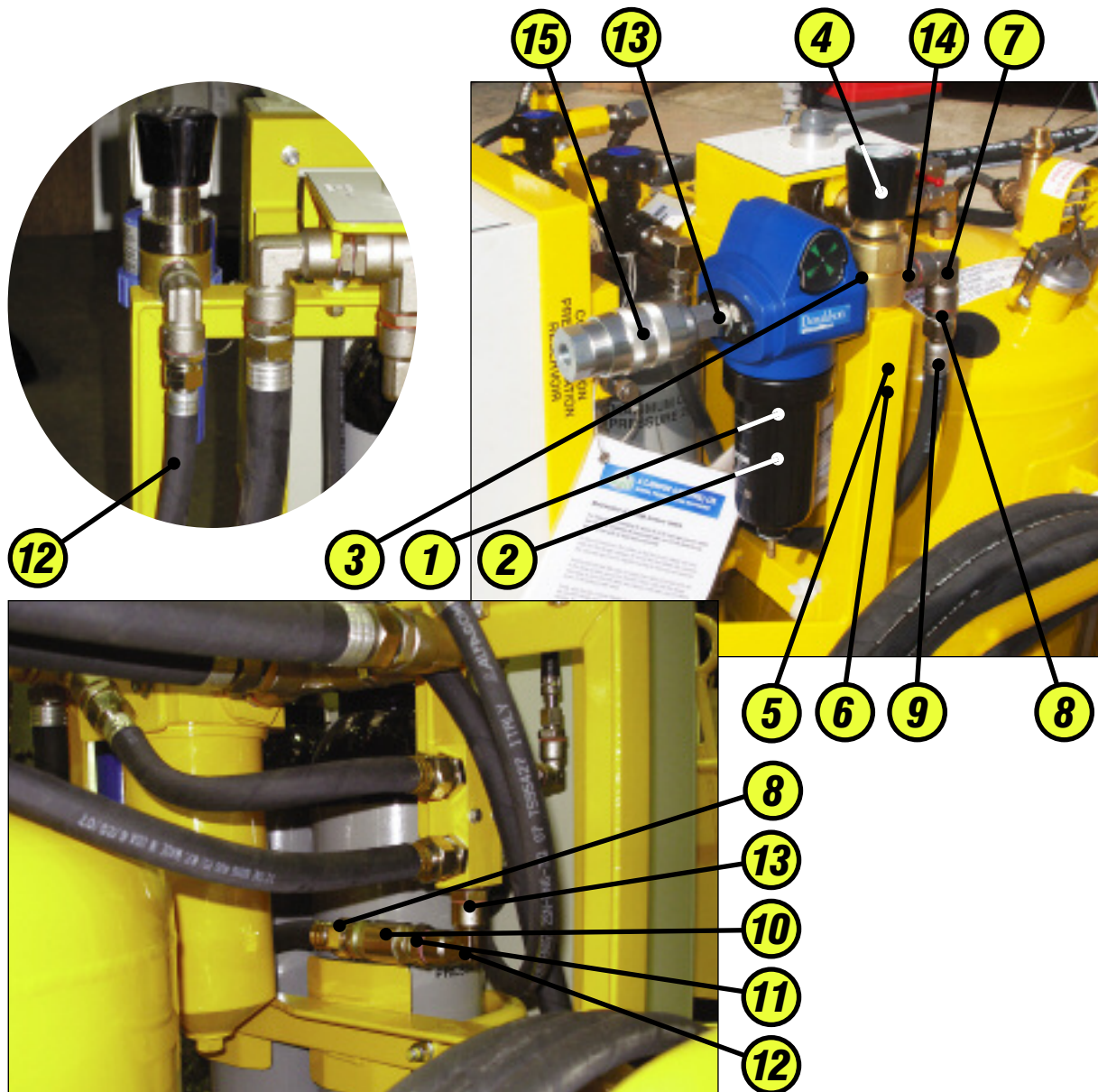
380/440V, 3 phase, 50hz electrical heating system incorporating control circuit for remote operation. Shown here is the Harting plug connecting the remote control box to the rig's control box.



The Accessory Air Inlet Kit (JMP/CFM56/D/6612) enabling the connection of an offboard compressed air or nitrogen supply.







### ACCESSORY INLET KIT

Item	Description	Part number	Qty
1	3/8" BSPT Filter housing	SM749	1
2	Pro filter element	SM749/1	1
3	3/8" x 1/4" BSP Adaptor	JMP/STD/A/5352	1
4	Nitrogen regulator	SM647	1
5	5mm x 15mm Hex HD BZP		2
6	5mm BZP washers		2
7	1/2" BSP equal elbow	SM052	1
8	1/2" x 1/2" BSP Adaptor	JMP/STD/A/5289	2
9	1/2" x 584mm (23") Hose assembly	JMP/RGT/HL/1322	1
10	1/2" Non-return valve	SM050	1
11	1/2" x 3/8" BSP Adaptor	JMP/STD/A/5353	2
12	3/8" x 3/8" BSP equal elbow	SM058	1
13	3/8" x 3/8" BSP Adaptor	JMP/STD/A/5141	2
14	1/2" x 1/4" BSP Adaptor	JMP/STD/A/1686	1
15	Stäubli connector	SM947	1