

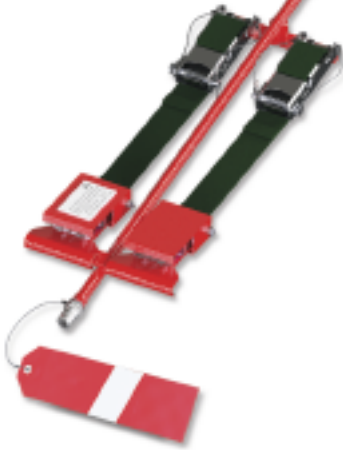
# **THE JUNIPER CFM56-2B AIRSEEKER LONG ENGINE WASH PROBES**

**JMP/CFM56/D/7153**

*(Supplied as set of two)*

## **Fitment Guide**

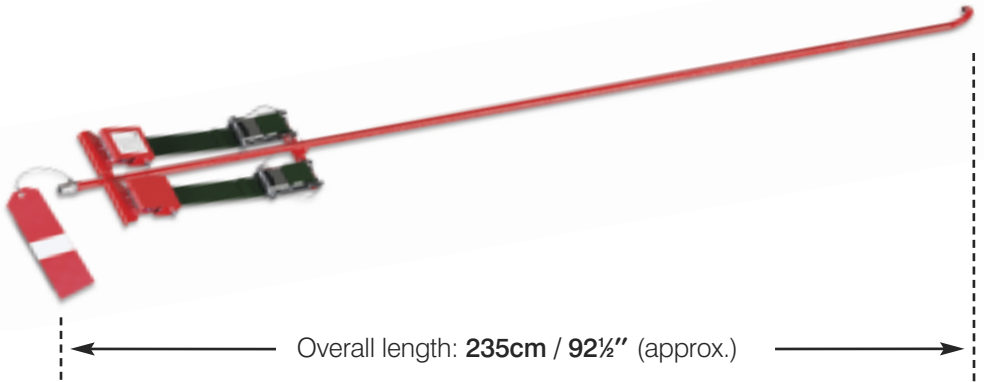
***Supplied as part of a wash  
package with the Juniper  
engine wash lance  
(JMP/CFM56/D/7156)***



**AIRCRAFT SERVICE EQUIPMENT**



**PROBES:** JMP/CFM56/D/7153 (Supplied as set of two).

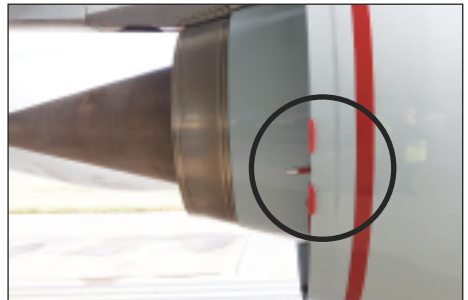
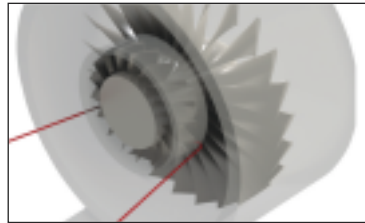


**STEP 1:** fitment to engine.

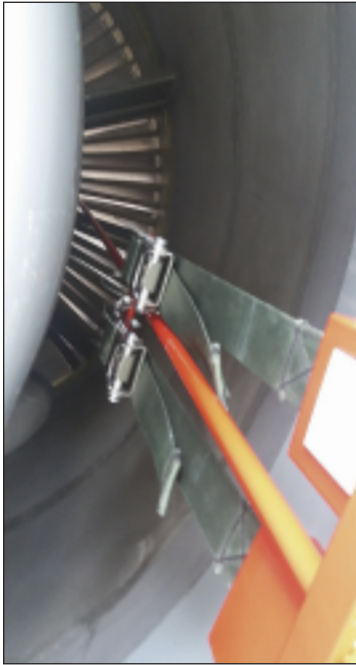
**Caution:** Ensure the engine fan is held securely during fitting of the engine 'j' hook probes.



Each probe to be inserted and fitted on the engine at approximately **4 & 8 o'clock** positions so that the probe 'j' hook fits over the booster / fan splitter.



*Left and right hand probes clamped in approximately the 8.00 and 4.00 o'clock positions on the engine awaiting connection of the twin hose assembly.*



Guide the probes through the fan outlet guide vanes (ogv's) from the aft end, at approximately the **4 & 8 o'clock** positions, aft looking forward.

Put probes over the booster/fan splitter so that the tips point between the booster inlet guide vanes into the booster and attach clamps. (See *STEP 2 for clamping instructions*).

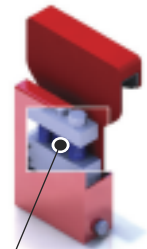
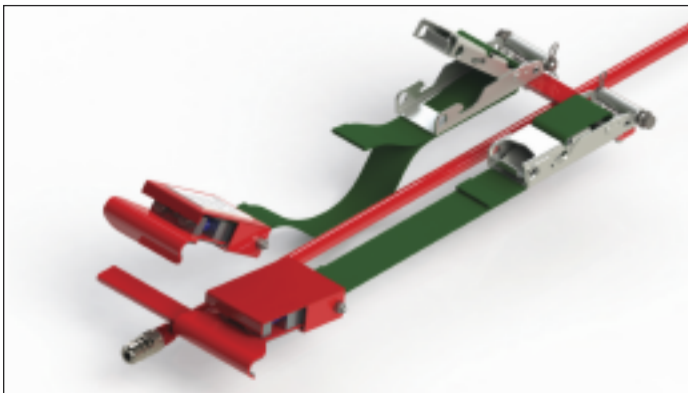
Connect the twin hose assembly (provided with all compressor wash rigs) to both of the engine probes, making sure that the probes are attached securely to the engine with the hoses attached.

Connect delivery hose from the wash rig to the twin hose assembly.

**Probe installation is now complete.**

Please refer to the relevant AMM for flow rate information.

## STEP 2: Securing the spring clamps



*Spring clamps prevents over-tightening when fitting each probe.*

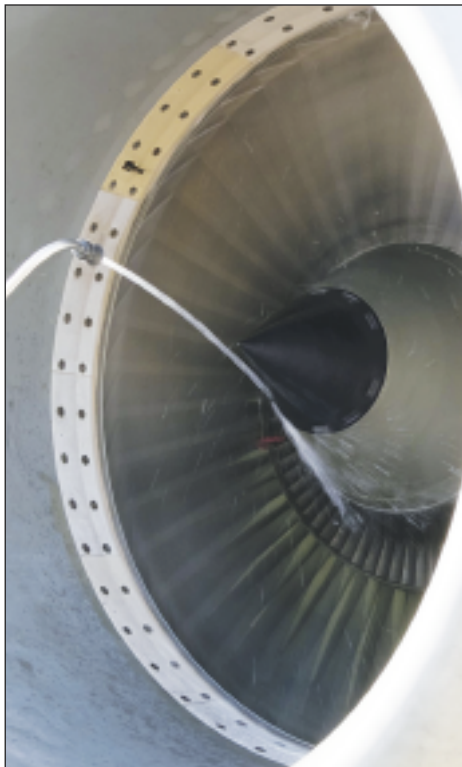
Each probe has two spring loaded clamps which are tensioned by over centre buckle clamping devices.

To release each clamp, remove the safety clip and pin and open each clamp by pushing forward on the releasing mechanism.

This will allow the spring loaded clamp to be removed for relocation on the engine. Once relocated, pull gently on the strap and re-apply over the centre buckle.

Re-fit safety pin and clip - once the probe is inserted and located in the engine.

**WASH LANCE:** part no: JMP/CFM56/D/7156.



*The Juniper wash lance being used to wash the engine fan blades as part of the engine wash procedure.*

#### Contact details



Contractors to  
H.M. Government Departments  
Registered with ISO 9001:2015

### **A.T.Juniper (Liverpool) Limited** Aircraft Service Equipment

#### **Head Office:**

Marshall Works, 5-17 Bleasdale Road, Allerton,  
Liverpool L18 5JB, United Kingdom

Tel: +44 (0)151 733 1553

Fax: +44 (0)151 734 3166

Email: [gse@juniper-liverpool.com](mailto:gse@juniper-liverpool.com)

Web: [www.juniper-liverpool.com](http://www.juniper-liverpool.com)

#### **Also At:**

Ash House, Prenton Way, North Cheshire Trading Estate,  
Wirral CH43 3DU, United Kingdom