

THE JUNIPER CFM56-3 SHORT ENGINE WASH PROBES

JMP/CFM56/D/4538

(Supplied as set of two)

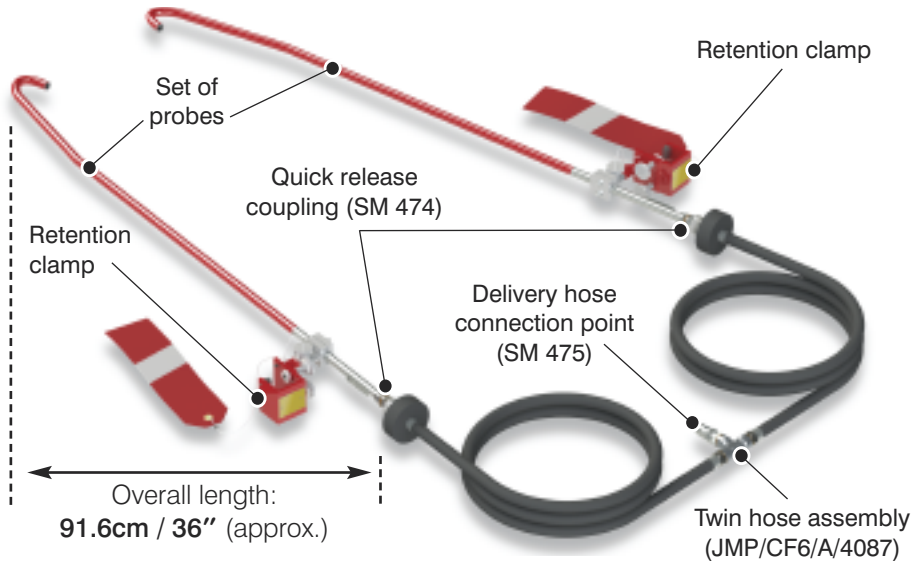
Fitment Guide



AIRCRAFT SERVICE EQUIPMENT



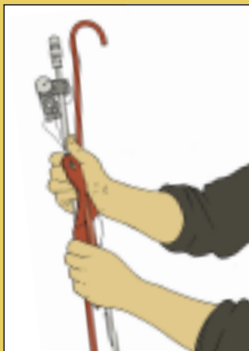
PROBE ASSEMBLY: Main points and connection to twin hose assembly.



PROBE CARE: Looking after your wash probes

CAUTION: The probes should be handled carefully and stored in the following manner to avoid damage.

When returning probes to the correct compartment in the storage box they should be placed 'top to tail' into the supplied equipment bag after draining them thoroughly.

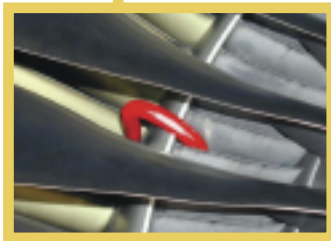
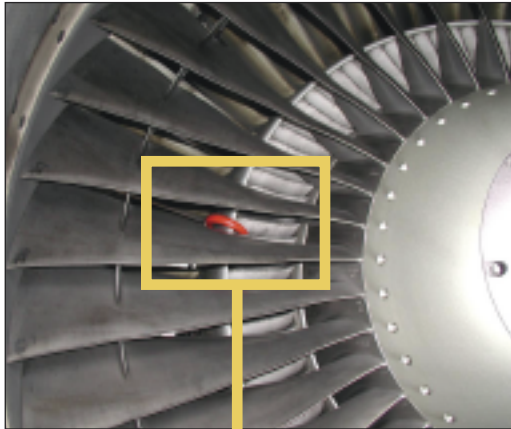


NOTE: Storage boxes are supplied in one of two standard sizes dependent on the size of probes ordered:

Small: (h) 39" x (w) 24" x (d) 15½"

Large: (h) 48½" x (w) 24" x (d) 15½"

STEP 1: Probe fitment to engine.



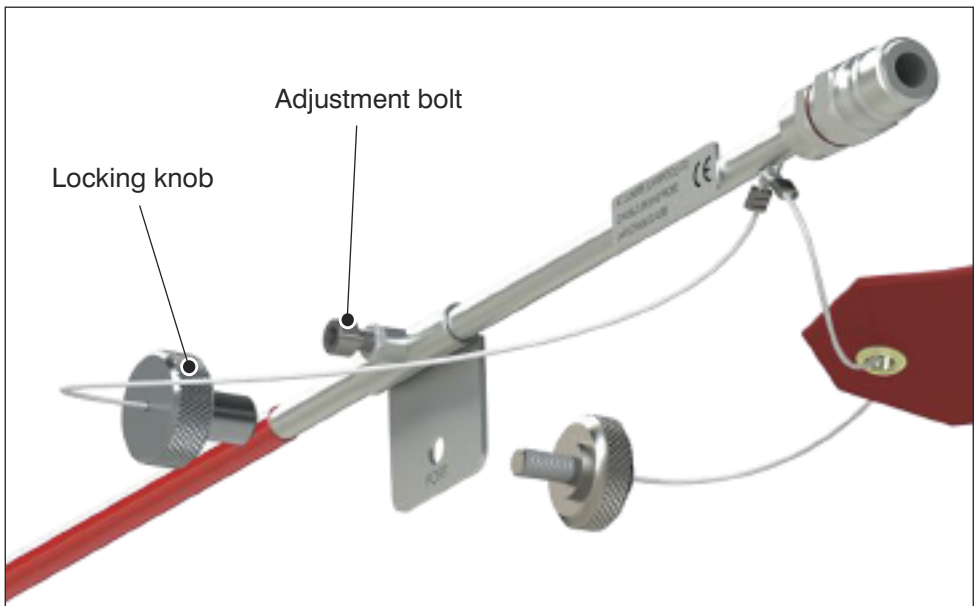
CAUTION:

Ensure that the engine fan is held securely during the fitting of the engine 'j' hook probes.

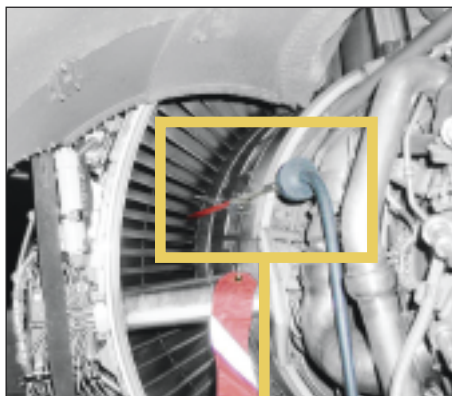
Separate the probe from the clamping bracket by unscrewing the locking knob and clamping screw.

Guide the probes through the fan outlet guide vanes (ogv's) from the aft end, at approximately the **2.00** and **10.00 o'clock** positions, aft looking forward.

Hook the probes over the booster/fan splitter so that the nozzle points between the booster inlet guide vanes into the booster.



STEP 2: Probe fitment with thrust reverser doors open.



There is a jig drilled 16mm diameter hole in the casing at the **2.00** and **10.00 o'clock** positions, aft looking forward.

Screw the clamping bracket over this hole with the clamping screw from the underside face and the locking knob on the outside.



Note: It may be necessary to adjust the bracket along the tube via the adjustment bolt and Allen key provided.



Connect the twin hose assembly (provided with all compressor wash rigs) to both of the engine probes, making sure that the probes are attached securely to the engine with the hoses attached.

Connect delivery hose from the wash rig to the twin hose assembly.

Probe installation is now complete.

Please refer to the relevant AMM for flow rate information.

Contact details



A.T.Juniper (Liverpool) Limited Aircraft Service Equipment

Head Office:

Marshall Works, 5-17 Bleasdale Road, Allerton,
Liverpool L18 5JB, United Kingdom

Tel: +44 (0)151 733 1553

Fax: +44 (0)151 734 3166

Email: gse@juniper-liverpool.com

Web: www.juniper-liverpool.com

Also At:

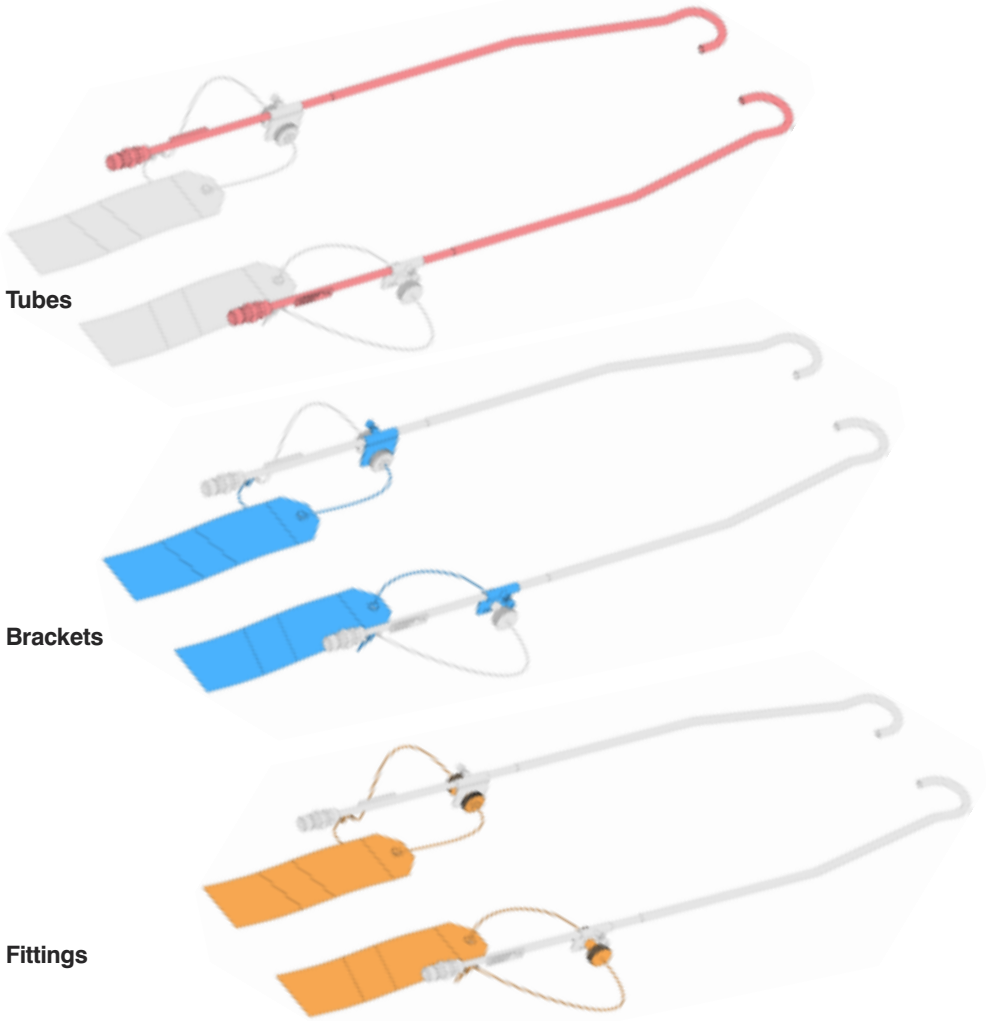
Ash House, Prenton Way, North Cheshire Trading Estate,
Wirral CH43 3DU, United Kingdom



Contractors to
H.M. Government Departments
Registered with ISO 9001:2015

PROBE SPARES: Each kit contains replacement parts for a set of two probes.

Replacement **tubes**, **brackets** and **fittings** kits are available for these wash probes. The **tubes (red)** kit consists of the welded tube assembly with red vinylastic coating, ID plate and Tema quick-release coupling. The **bracket (blue)** kit consists of clamping brackets, warning pennants and talurit cables. The **fittings (orange)** kit consists of clamping knobs, warning pennants and talurit cables. The part numbers for each kit is below.



Probe tubes kit	JMP/CFM56/D/4538/TUBES
Probe brackets kit	JMP/CFM56/D/4538/BRACKETS
Probe fittings kit	JMP/CFM56/D/4538/FITTINGS