

**THE JUNIPER
PW4000-100" FAN SHORT
ENGINE WASH PROBES**

JMP/PW4000/D/6216

(Supplied as set of two)

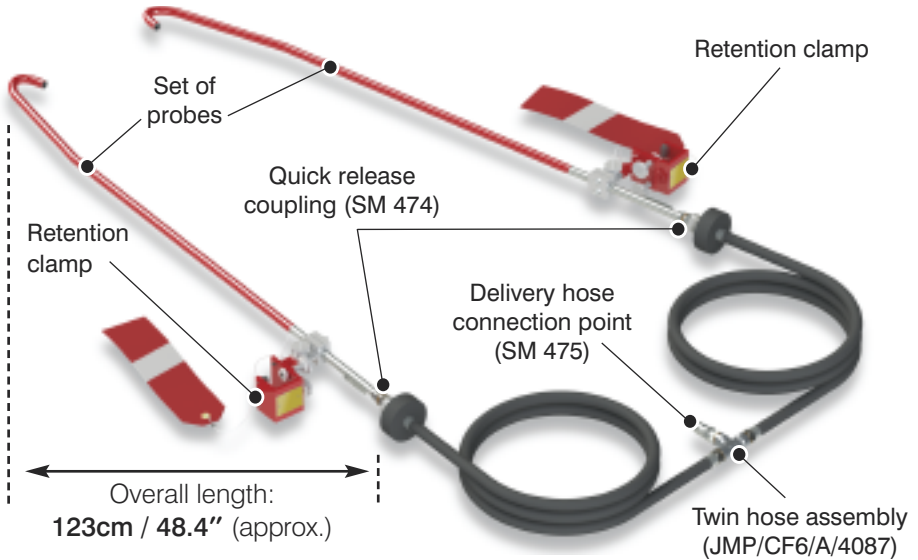
Fitment Guide



AIRCRAFT SERVICE EQUIPMENT



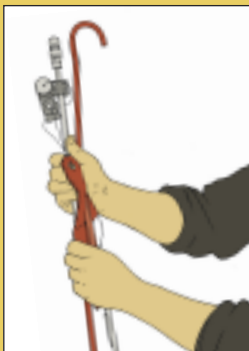
PROBE ASSEMBLY: Main points and connection to twin hose assembly.



PROBE CARE: Looking after your wash probes

CAUTION: The probes should be handled carefully and stored in the following manner to avoid damage.

When returning probes to the correct compartment in the storage box they should be placed 'top to tail' into the supplied equipment bag after draining them thoroughly.



NOTE: Storage boxes are supplied in one of two standard sizes dependent on the size of probes ordered:

Small: (h) 39" x (w) 24" x (d) 15½"

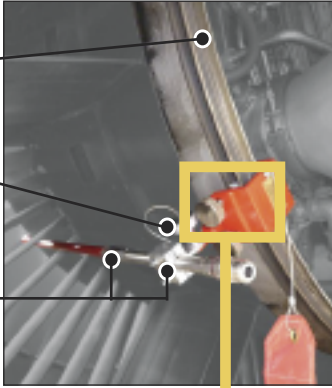
Large: (h) 48½" x (w) 24" x (d) 15½"

STEP 1: Probe fitment to engine.

Thrust
reverser
door ring

Locking
knob

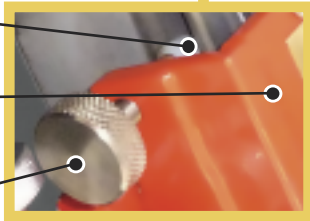
Probe
tube and
bracket



Nylon pad

Clamp
bracket

Clamping
screws



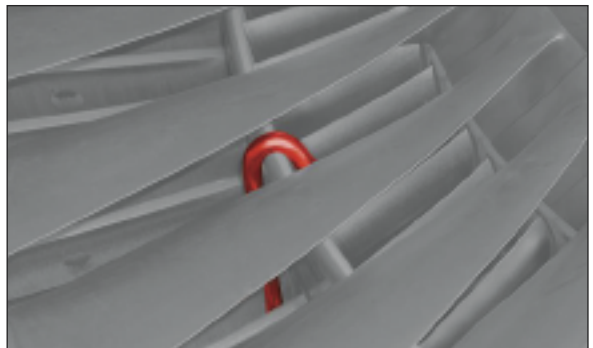
CAUTION: Ensure that the engine fan is held securely during fitting of the engine 'j' hook probes.

Separate the probe from the clamping screw by unscrewing the locking knob and then set the tube aside.

Offer up the clamping bracket to the thrust reverser door ring shown above at approximately the **4.00** and **8.00 o'clock** positions and loosely tighten the clamping screw onto the lip of the ring until the nylon pad contacts the face and the bracket sits straight.

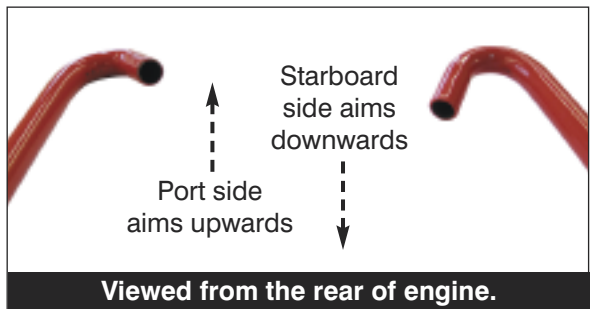
Retrieve the probe tube and guide it through the closest outlet guide vanes in relation to the clamping bracket and hook the nozzle over the fan / booster splitter (continued in step two).

Guide the probes through the fan outlet guide vanes (ogv's) from the aft end at approximately the **4.00 o'clock** and **8.00 o'clock** positions, aft looking forward.

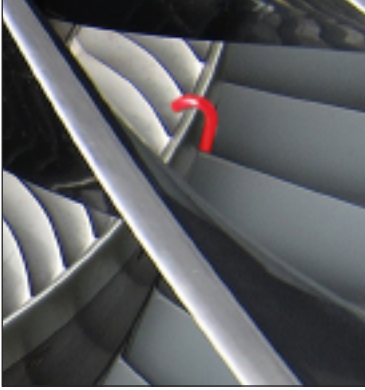


Hook the probes over the booster/fan splitter so that the nozzle points between the booster inlet guide vanes into the booster.

Guide the probe tube through the closest outlet guide vanes in relation to the clamping bracket and hook the 'J' hook nozzle of the probe over the Fan/Booster splitter with the tip aiming between the inlet guide vanes and into the engine core.



STEP 2: Adjust bracket and connect twin hose assembly.



Note: The probes shown here are for illustrative purposes only and are not necessarily the actual probes featured.

Locate the probe tube swivel bracket over the stud on the clamping bracket (it may be necessary to adjust the tube bracket to achieve a suitable position).

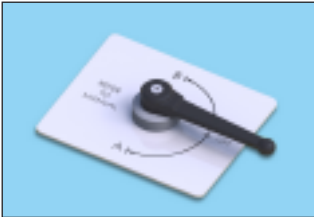
Replace and tighten the locking knob and check clamping screws.

Connect twin delivery hose (supplied with all compressor wash rigs) to each probe and check that both probes are secure.

Connect the twin delivery hose to the delivery hose from the rig.

Probe installation is now complete. Please refer to the relevant AMM for flow rate information

Delivery hose selection



When using P&W 4000 engine wash probes, turn the three way selector to position 'B' this ensures selection of the 1/2" bore delivery hose.

Contact details



A.T.Juniper (Liverpool) Limited Aircraft Service Equipment

Head Office:

Marshall Works, 5-17 Bleasdale Road, Allerton,
Liverpool L18 5JB, United Kingdom

Tel: +44 (0)151 733 1553

Fax: +44 (0)151 734 3166

Email: gse@juniper-liverpool.com

Web: www.juniper-liverpool.com

Also At:

Ash House, Prenton Way, North Cheshire Trading Estate,
Wirral CH43 3DU, United Kingdom



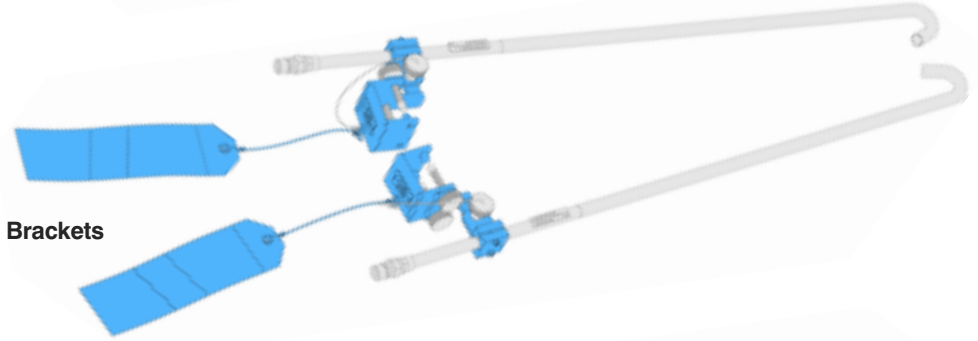
Contractors to
H.M. Government Departments
Registered with ISO 9001:2015

PROBE SPARES: Each kit contains replacement parts for a set of two probes.

Replacement **tubes**, **brackets** and **fittings** kits are available for these wash probes. The **tubes (red)** kit consists of the welded tube assembly with red vinylastic coating, ID plate and Tema quick-release coupling. The **bracket (blue)** kit consists of clamping brackets, warning pennants and talurit cables. The **fittings (orange)** kit consists of clamping knobs, warning pennants and talurit cables. The part numbers for each kit is below.



Tubes



Brackets



Fittings

| | |
|--------------------|----------------------------|
| Probe tubes kit | JMP/PW4000/D/6216/TUBES |
| Probe brackets kit | JMP/PW4000/D/6216/BRACKETS |
| Probe fittings kit | JMP/PW4000/D/6216/FITTINGS |